



NEW ZEALAND CHINESE ASSOCIATION INC.
CANTERBURY BRANCH
紐西蘭堅都布厘華聯支會

22 St Asaph Street,
Christchurch.
nzcacanterbury@gmail.com

P O Box 31-276, Ilam
Christchurch 8444

November 2019 Newsletter

End of Year Christmas Party & Picnic 2019

Date: Sunday 24th November 2019
Time: 11.00am – 3.00pm
Location: Canterbury Chinese Association Hall & Hagley Park (Hagley Avenue)

FREE Sausage Sizzle! FREE Fun! FREE For All!

An invitation is opened to welcome all members along with your family and friends to join our Committee for the annual end of year pre-Christmas function. A fun filled afternoon with entertainment, novelty games/races, lolly scramble, and many more activities, completed with a special visit from Santa.

PLEASE NOTE THE CHANGE OF VENUE:

The meeting point for the event will be at the NZCA Canterbury Hall (22 St Asaph Street) to mix and mingle from 11am. If the weather is favourable we will walk across to Hagley Avenue at the top end of St Asaph Street for a shared picnic lunch and outdoor activities. If the weather is cool we will hold the event at the Chinese Hall.

- Please bring a plate for a combined shared lunch. (Free Sausage Sizzle provided)
- Please supply own drinks.
- Plates and utensils will be provided.
- Open Day registrations will be taken for the 2020 Annual NZCA Sports Tournament held in Auckland
- Official programme will commence at 1.00pm after lunch.

For further information contact Emmie King (graem88@xtra.co.nz) ph 021 211 7441

Please join us and bring along family and friends for a fun, fabulous and free outing!

72nd Annual NZ Chinese Association Sports Tournament & Cultural Show 2020



Recruiting Canterbury Participants for the 2020 Chinese Easter Sports Tournament!

The 72nd Annual NZCA Sports and Cultural Tournament 2020 will be hosted by Auckland Branch over Easter weekend held from Good Friday 10th April to Easter Monday 13th April 2020. The Annual flagship event of NZCA is held each year on a rotational basis by NZCA Branches, Wellington, Otago-Southland (OSCA), Auckland and Christchurch Branches.

The objective in the spirit of the tournament to encourage participation, promote goodwill, friendship, mutual understanding and healthy competition. Open to all ages from 5 years to Veterans. NZCA Canterbury invites participants to join our team to represent NZCA Canterbury branch. Various sports ranging from Athletics (Relays). Badminton, Basketball (5 years to Veterans), Golf, Indoor Netball, Futsal (Indoor Soccer), Lawn Bowls, Outdoor Netball, Table Tennis, Tennis, Touch and Volleyball will be contended over the weekend.

Valuing NZCA's major gathering as a family, a great opportunity to meet up, reacquaint old friendships and make new friends with many Chinese around New Zealand. Formal Opening and Closing ceremonies with social functions are held each night for the young and the old. Express your interest to be part of this unique social event. We'd love to have you represent Canterbury and be part of this special challenging weekend.

Participants must be a registered member of their contingent branch and abide to the NZCA eligibility rules governing the tournament to take part in the competition. Canterbury Branch will create volunteering opportunities to help fundraise towards subsidising your accommodation and transport needs and keep you updated with the latest developments from Auckland Branch.

If you wish to be part of the Canterbury Branch Tournament organising team, contact Emmie King: graem88@xtra.co.nz or mobile: 021 211 7441

<https://www.facebook.com/NZCAAucklandEasterTournament2020/>

VOLUNTEERS REQUIRED for FUNDRAISER – FREE Entry to the South Island. Canterbury Agricultural Day Clean up: Friday 15th November 2019

Be part of the Waste Management team cleaning up at the Canterbury Anniversary Day showgrounds.

Two hours of fundraising and a great day out to support NZCA Canterbury!

A fundraiser for you and your family to gain free entry into the 2019 Canterbury Agricultural show. Funding towards supporting activities and to benefit subsidizing participants attending the annual NZCA Sports tournament. We welcome your contribution as a member to volunteer with any assistance.

Please forward your names as soon as possible if you wish to assist with the fundraiser. Contact Emmie King, graem88@xtra.co.nz or mobile: 021 211 7441.

Beca Christchurch Heritage Festival 2019

The district's annual Heritage week has grown to become the Christchurch Heritage Festival which brings together a wide range of community events and activities from 7 to 28 October 2019.

In keeping with this year's theme "Encounter Our Stories", the Canterbury branch of the NZ Chinese Association had a great opportunity to be part of the Festival with a display on the ground floor at Tūranga, Christchurch Central Library on Saturday 12th and 19th October.



Our display highlighted the history of NZCA and the numerous publications on the history of the Chinese people and settlements in New Zealand.

Celebrating Mooncake Festival



The **Mid-Autumn Festival** is celebrated throughout Asia when the moon is supposedly the roundest and fullest during the year, the fifteenth day of the eighth month of the Lunar year. In the Gregorian calendar, this is 13th September in 2019 and will be 1st October in 2020. In China, the Mid-Autumn Festival has since become associated with family reunions, bountiful harvest, and of course mooncakes, hence now also known as “Mooncake Festival” which seems to be more appropriate name to use in New Zealand when we are welcoming Spring in the Southern hemisphere.

Mooncakes

Our Association is very fortunate to have experts Cindy Chan and Jane Gin who are willing to share their knowledge and skill so that art of making Cantonese mooncakes can be maintained. The process is very labour intensive and involves salting duck eggs and boiling syrup for the pastry well ahead of the day that the cakes are made – by assembling rounds of pastry and fillings into the moulds.

Making and sharing mooncakes is one of the hallmark traditions of this festival; a great start when a large group of volunteers gathered around the Association Hall’s kitchen bench, each person with their specific exacting task to ensure the perfect cake would emerge from the mould before being baked, glazed, cooled and finally packed ready for pre-orders. Huge (free) labour of love packed into one cake!



Celebration Lunch

NZCA Canterbury celebrated Mooncake Festival Lunch on Sunday 8th with members and friends with our special guests Deputy Consul General Mr Zhai Xingfu and his Secretary Ms Lang Yu. The entertainment was provided by the Women’s Line dancing group and poetry reading by children from the Sunday Chinese class. Favourites such as sweet and sour pork, fish balls, Chinese mushrooms, assorted fresh vegetables, chicken, fried vermicelli, mooncakes, and fruit were included in the impressive menu.

We are very thankful for the amazing kitchen team !



Sew Hoy Family 150th Year Anniversary Reunion (by Rhonda Ding)

The Sew Hoy Family 150th Year Anniversary Reunion, held in Dunedin on the weekend of 27-29 September this year, was attended by 240 of 1,000 living descendants. The previous two Reunions were held in 2007 in Queenstown and 2013 in Dunedin. 2019 marked the milestone of 150 years since Choie Sew Hoy arrived in New Zealand, marking the beginning of the Sew Hoy family. The Reunion was attended by descendants of many generations young and old, many from within NZ and others coming from United Kingdom, Hong Kong, Singapore, Australia, America, France, China etc. It was indeed a very special and memorable occasion. I felt immensely fulfilled with the meeting of so many of our extended family during the weekend celebrations.

The Reunion Programme;

FRIDAY; Official Welcome followed by a night of team ten pin bowling, catching up with old family members and also meeting family members we did not know.

SATURDAY; A day of exploring Dunedin visiting: the site of Choie Sew Hoy's original residence, Toitu Early Settlers Museum, Chinese Gardens, Choie Sew Hoy's Store in Stafford St and Ancestral graves in Southern Cemetery. In the evening a formal dinner was held at the Savoy Restaurant with the theme of "peace and prosperity".

SUNDAY; Family Activity Day (Sew Hoy Family fun quizzes and games) and Generation photos.



Choie Sew Hoy (1838-1901)

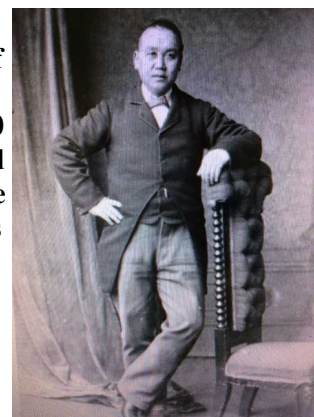
Choie Sew Hoy, who is my mother, Winnie Ding's (nee Sew Hoy) Great-Grandfather and also my Great-Great-Grandfather, was born in 1838 in Sha Kong, in the Upper Panyu district of Guangdong Province in China. At age 13 he went to the goldfields of California and then later to Victoria, Australia. He arrived in NZ in 1868 aged 30, and set up business in Stafford Street as a merchant. He supplied miners and goldfield traders, imported goods, exported fungus (muk yee) and invested widely in gold mining and water-race ventures.

Choie Sew Hoy had four children by his first wife in China. Later on, he had two children by his second wife in Dunedin, the New Zealand-born



Eliza Prescott .He died in 1901 in Dunedin aged 63 years.

In October 1902, Choie Sew Hoy's bone coffin and 498 other bone coffins of Chinese people were being shipped back to China for reburial at ancestral sites when the SS Ventnor Ship hit rocks off the Taranaki Coast and sank 10 miles off Hokianga Harbour leaving many coffins and bones lost at sea. And it is still there, at the bottom of the sea, that many still remain, including the bones of my Great-Great- Grandfather. At the time, some coffins and bones floated up on shore and were reburied by the local Maori people. The exact site of the sunken ship with many of the coffin remains was recently discovered in 2012. May all your souls rest in peace.



“STARCH WORK BY EXPERTS”

Chinese Laundries in Aotearoa New Zealand

This long-awaited publication on the history of Chinese laundries in New Zealand is available at the end of October.

Please pre-order these limited edition books (\$49.95 per copy) as soon as possible.

For order details, contact Lois Yee, email yeelois@yahoo.com or phone 0225647933.



Chinese laundries first opened in the 1880s and were an integral part of New Zealand's social fabric until at least the 1950s. How did they develop in towns from Southland to the far north before slowly disappearing after the 1940s? Who ran them and how did they fit into their communities? *Starch Work by Experts: Chinese Laundries in Aotearoa New Zealand* tells the story of the laundrymen, their families and customers.

Hand laundries were one of four main occupations for early Chinese settlers, along with mining, market gardening and storekeeping. They provided a low-cost stepping stone to a new life through hard work, skill and long hours. This book counters the stereotype of Chinese laundry work as menial and unskilled. While Chinese laundries were humble establishments, Chinese laundrymen (and women) were experts in starching, particularly men's shirts and detachable collars. Blending documentary research, personal stories and fascinating images, *Starch Work by Experts* goes beyond the grille to step inside the world of steaming coppers, hissing irons and perfectly starched collars.

Dr Joanna Boileau is an historian specialising in the history of the Chinese in New Zealand and Australia. Her most recent book *Chinese Market Gardening in Australia and New Zealand: Gardens of Prosperity* was published by Palgrave Macmillan in 2017.

NZCA Canterbury Chinese Hall Kitchen Renovations

The Canterbury Executive Committee has been discussing over the past months for the great need to update the Hall Kitchen by bringing the kitchen up to the regulation standards with more efficient working conditions. An announcement to notify members of the kitchen improvements was brought to their attention at the Mooncake festival to open any suggestions or feedback towards the upgrade renovations. Initial planning is underway under the guidance of an award winning kitchen designer Margaret Young (OSCA – NZCA Otago Southland Branch) to design the new layout.

Steering the group is Wing Gin as the Project Manager, coordinating with Jenny and Peter Yee who all have many years of experience and expertise in working in the hospitality trade. This will enable the Kitchen Renovation Committee Team of Roy Chin, Marisa Yeung, Jane Gin, Emmie King, Fran Yee, Lois Yee, and Rhonda Ding to assist in further discussions to proceed the project in a good manner. We give thanks to the Kitchen renovation Committee team.

We do however, request our members to support this project to contribute towards the beneficial project for the community for a more modern and updated kitchen. We would appreciate any donations or sponsorship towards funding this major Kitchen Renovation Project making this a success. Please contact **Fran Yee (ph 021 138 3663 or fannieyee@yahoo.co.nz)** if you are able to contribute with donations.

2019 Global Basketball Tournament

Over the weekend of October 5th-6th "Peking Dunk" represented the NZCA Canterbury Branch at the 9th annual Global Basketball Tournament, organised by the Philippine Culture and Migrants Services. The opening ceremony kicked things off at 8:30am on Saturday morning, which proved too early for some. The tournament was opened with a message from Dr Surinder Tandon from the Christchurch Multicultural Council, who talked on healthy competition and a sense of belonging in a community. Games followed afterwards, ending with the tournament prize giving on Sunday late afternoon. The team won four of its seven games, and ended up placing third overall. The games were both enjoyable and challenging, with lessons learned to take back for next year. The team would like to thank the NZCA Canterbury Branch organising committee and its members for their generous sponsorship.



Social Activities

Regular weekly activities held at the NZ Chinese Association Hall, 22 St Asaph Street unless specified. For interest contact the following:

NZCA Canterbury Social Activities

Regular weekly activities held at the NZ Chinese Association Hall, 22 St Asaph Street, unless specified.

Beijing Health Promoting Exercise Group-Beijing style exercise sessions. Saturday mornings from 10:30am -11:30am. Members \$2, non-members \$3. **Contact Jane Gin (ph 021 175 5866)**

Chinese Language Classes - Cantonese, Advanced, Intermediate & Beginners Mandarin:

Sunday mornings. Beginners Mandarin 9.30-11am, Intermediate Mandarin 10-11am, Advanced Mandarin 10-11.30am, Beginners Cantonese 9.30-11am, Cantonese 9.30-11am. English as a Second Language 9.30-11am. School terms and holidays coincide with the public primary school timetable. School fee \$25 per term for each student.

Contact Fran Yee (ph 021 138 3663 or fran.yee@yahoo.com)

Karaoke Sing-A-Long – Sing along to your favourite songs, be entertained, dance and have fun!

Held monthly (TBA on monthly notices) on Sundays at 2pm

Time: 2:00 pm

Where: NZCA Canterbury Hall.

Cost:\$4 per person

Contact Jane Gin (ph 021 175 5866)

Line Dancing

Saturday mornings 9.15am-10.15am. Cost \$3. Keep fit, socialise and dance to popular music. Come along, bring a friends and enjoy classical dance steps (no partners required!)

Contact Emmie King (graem88@xtra.co.nz)

New Vogue and Ballroom Dance Classes

New Vogue and Ballroom Dance Classes Sunday evenings from 7.00pm – 8.00pm. Held at the NZCA Canterbury Hall, under the guidance of a professional tutor with years of experience. Parking at rear of Hall. \$10 per dancer. Contact Emmie King (ph 021 211 7441, graem88@xtra.co.nz)

NZCA Canterbury Multi-Sports Programme – Various sports (badminton, basketball, fitness, volleyball, soccer, dodgeball and more

Training sessions from 11.30am – 12.30pm. Cost \$3 per session. Held at Graham Condon Recreation and Sports Centre (3 Sisson Drive, Papanui). Cost \$3. Contact Emmie King (graem88@xtra.co.nz).

NZCA Future Dragonz Canterbury - (Associate Social Group of NZCA)

A social young adults group suited for age between 20-35 years, that meet up regularly to explore new experiences by networking with other young Chinese and other like minded young adults. Contact Tony Ng toneohsix@gmail.com or Visit: www.futuredragonz.org.nz

Qiao Yi Lion Dance Team Christchurch - Saturday trainings at the Association Hall from 3:30 – 4:30pm. Contact George Chan (ph 021 188 6096, gwchan71@yahoo.nz)

Lifestyle Walking Group-Social walking group. Keep fit at any age, share a lunch after your walk on Friday mornings from 10.00am. Contact Tim Ng (ph 339 0188, ng.tim@xtra.co.nz) or Marisa Yeung (ph 021 112 6265, hopyick@xtra.co.nz)

Tai Chi Class- Sunday from 9-10am. Gold coin donation. Contact Marisa Yeung (hopyick@xtra.co.nz)

We warmly welcome your attendance at our activities and look forward to meeting up.

NZCA Canterbury Website: canterbury.nzchinese.org.nz

- Visit the website for latest updates, general notices, activities and up-to-date events.
- Follow the NZCA National Branch website links for information, updates and resources.
- Our website has a photo gallery and access to past newsletters and events.
- Applications for NZCA membership subscription can be downloaded off the website for existing and new members.

Members are invited to submit articles or matters of interest through our newsletters and social media platforms for publishing. Please contact the editor/Canterbury webmaster Ronald Lee (ronald18@orcon.net.nz).

[Check out our NZCA Canterbury Facebook page](#)

<https://www.facebook.com/CanterburyBranchNZCA/>

Acknowledging Donations

Thank you to the following groups for their continuing support and generosity with contribution of donations to the Canterbury Branch of NZCA.

Beijing Exercise Group donation of \$361.00

Tai Chi group donation of \$348.60

Line Dance Group donation of \$248.00

Obituary

We sadly report the passing of our fellow members:

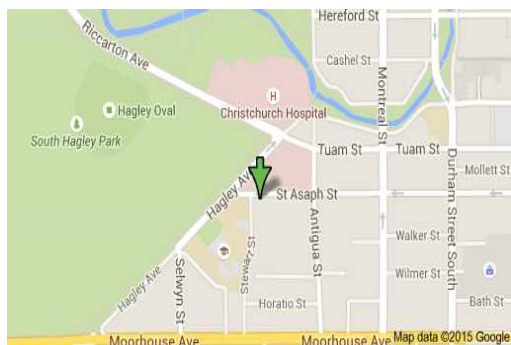
Mrs Thelma Moy (27.8.19). Dearly loved wife of Don, and a cherished Mother and Grandmother. Thelma generously donated lovely gifts to our association that came of good use. As a member, Thelma was known for demonstrating her cooking skills as one of the many helpers who assisted with making Jungs and Mooncakes for our Chinese festival lunches.

Thelma will be sorely missed among her family and friends and will be remembered as a kind and giving person towards our community.

Mrs Nan Yuen (Hilda) (13.10.19), was an active past member who sadly passed away peacefully at Parkstone Care Home.

We convey our deepest condolences to both Thelma and Nan Yuen's families.

NZCA Canterbury Chinese Association Hall - AVAILABLE FOR HIRE



22 St Asaph Street, CBD

***Ample floor area with removable stage
large kitchen and cooking facilities
Conference room, Sound system***
Discounted hire rates for NZCA members

**For bookings contact: Marisa Yeung
(ph 021 112 6265, hopyick@xtra.co.nz)**

Memberships, Receiving Newsletters by Email or Change of Address

Your continued support as a member is an important factor in our organisation. We provide funding for events, membership discounts, activities for members and regular publishing of newsletters. Join up as a member to receive the many benefits or to meet up socially to connect with our organisation nationally over New Zealand.

Please advise a change of address in writing or email to The Secretary, NZCA Canterbury,
PO Box 31-276, Ilam, Christchurch 8444

We encouraged members to receive newsletters and notices by email to receive current updates.

Please contact Canterbury Secretary, Rhonda Ding at nzcacanterbury@gmail.com or 021 259 0745.

End of Year Report

A huge thank you to Canterbury Branch Tournament coordinators Victoria King and Matthew Klomp for organising the Canterbury team who competed this year in Dunedin for the 2019 NZCA Annual Sports Tournament, Auto Restorations for the hire of their carpark during our festival events, activity group leaders, Chinese School teachers, and especially the generous support from you as Members who contributed towards NZCA Canterbury in 2019. Your generosity to participate in providing support and donations towards our community

strengthens to grow our successful organisation, providing a sense of belonging that has been maintained over 85 years of our Chinese historical heritage in New Zealand. As we become one of many of the diverse ethnic groups, we celebrate our Chinese culture for the future generations to come.

Finally, I am immensely grateful for the 2019 executive committee members: Cindy Chan, Ian Chan, Roy Chin, Rhonda Ding, Jane Gin, Adrienne Kilduff, Graham King, Ronald Lee, Darette Lowe, Tim Ng, Conrad Wing, Fran Yee, Lois Yee, and Marisa Yeung for giving of their endless efforts for outstanding commitment and dedication, contributing towards our very stable community. Also, a special note of thanks to Future Dragonz leaders Tony Ng and Melissa Wong for their efforts in maintaining admirable leadership roles.

**Emmie King
President**

Disclaimer.

Neither the association nor any person or persons associated with it, accepts any liability whatsoever for the contents of this newsletter which has been prepared in good faith without material reward and to the best of our knowledge is true and correct in all aspects.



2019 年 11 月通訊

*聖誕節野餐 2019(請留意地点)11.00AM 至 3.00PM

今年的聖誕節野餐於 2019 年 11 月 24 日在 本會所及 Hagley Park (22 St. Asaph Street) 舉行,在上午 11:00 開始。請與家人及好友齊來參加,有聖誕老人來臨,小童及成人有趣遊戲比賽,糖果爭奪戰,本會提供燒烤香腸及麵包。

請留意今年場地改

今年的活動在本會所,從 11 點開始,如果天氣好將步行到街尾的 Hagley Park,共享午餐及燒好香腸,下雨或太冷的話便在會所舉行。

*請你們也帶一盤食物(如沙拉,甜品,薯仔等) 共同分享。

*大會將提供碟及餐具。

*請自備飲料

*節目約下午 1:00 開始

*2020 年度 **第 72 屆復活節運動大會參賽者接報名**。同時可留意屋崙分支的最新動向。

聯絡人:Emmie king ph:021 211 7441 或(graem88@xtra.co.nz)

*第 72 屆復活節運動大會 2020 年 屋崙

招募參加 2020 年運動比賽健兒,在屋崙明年 4 月 10 日至 13 日,

運動會每年由四個城市輪流舉辦,惠靈頓,歐他哈修付崙,奧克蘭,基督城,體育比賽致在參與促進友誼,互相理解,良性競爭為本,歡迎由五歲至老手參加,華聯會籍此聯繫在紐西蘭的中國人互相結交,誠邀請你們積極參與以下各種運動,如田徑,羽毛球,籃球,高爾夫球,室內投球,室內足球,草地球,戶外投球,乒乓球,網球,Touch,排球,並每晚有社交活動,

老朋友叙會及結交新的朋友,

參賽者請早日報名,大會規則要每參加者均屬華聯會成員

本支會為此活動舉辦籌款活動,以支助補貼參賽者的住宿及交通費用。

本支會運動協調人: *Emmie King: graem88@xtra.co.nz* 手機 021 211 7441

*招募義工農展覽會_場地清潔

義工只需要在 11 月 15 日農展覽會場上工作 2 小時,為場地收拾垃圾便可以支助明年參加運動會人員籌備經費,並可以免費進場參觀農展覽會,一舉兩得。

請聯絡: Emmie King, graem88@xtra.co.nz 或手機: 021 211 7441.

*中秋節

在亞洲中秋節是比較隆重節日，而農曆八月十五日是月亮最圓的一天，今年在西曆 9 月 13 日，而明年便在 10 月 1 日。在中國文俗，中秋節的義意是家人團圓，豐收及吃月餅，而在西方南半球的紐西蘭正直春天時候，便稱之月餅節更為適合。

我們會所非常幸運得到陳簫麗華及甄甌彩貞教導製造廣東式月餅，過程復雜，數月前便先醃製咸鴨蛋，煮糖漿(月餅皮) 等程序。義工們參與製造月餅成為傳統之一了，廿人圍在廚房的長枱，每人有一個嚴格的任務，確定每個月餅離開月餅印後是一個圓整的月餅，而烘焙，上蛋色，冷卻，包裝等，最後便是一個愛心月餅。

於 9 月 8 日在會所舉行中秋節午餐，貴賓有中國副總領事翟興付先生，秘書楊璐女士參加。本會的女仕們排舞助慶，中文班的孩子們讀詩歌。餐宴後卡拉 OK 繼續娛樂。

今年的菜單有甜酸咕嚕肉，魚丸，冬菇，炸雞翼，豉油雞，粉絲，水果，及月餅都令人震撼感覺。同時感謝廚房內的一班義工。

*徐肇開家族 150 年週年團聚聯誼會 (Rhonda Ding)

在 9 月 27 日至 29 日有千名徐肇開後人的其中 240 人出席於登尼丁的聚會，前二次聚會於 2007 年皇后城和登尼丁 2013 年舉行。

今年是徐肇開到達紐西蘭 150 年的紀念，也是徐氏家族在紐西蘭落地生根。今次的聚會，徐氏後人攜老帶幼出席，他們來自不同的國家，有英國，香港，星加坡，澳洲，美國，法國，中國等，這個聯歡會給我跟這麼參多家族成員聯繫，確實令人難忘。

聯誼會節目：

星期五：在聯歡會銜歡迎詞後，晚上去打保齡球，跟相識的或從未謀面的成員玩在一起。

星期六：參觀徐肇開的祖居，早期開拓者博物館，中國花園，徐肇開於登尼丁 Stafford Street 的商店，祖先墓園，晚上有名為“和平及繁榮”為主題的晚宴於 Savoy 酒樓。

星期日：大家庭拍照及益智遊戲節目。

徐肇開(1838 至 1901)

徐肇開是我媽媽(Winnie Ding 鄧家樑太太) 的曾祖父，我的曾曾外祖父，出生於 1838 年，廣東省，番禺，社崗村，13 歲時便去了美國加州金礦，之後到了澳洲的維多利亞省，30 歲到達紐西蘭，在登尼丁 Stafford Street 開始經商，進口貨物供應給礦工，金礦商，出口木耳，並廣泛投資於開採金礦和用水壓開採的企業。徐肇開在中國與第一任夫人共有四名子女，其後在紐西蘭與登尼丁出生洋人 Eliza Presatt 女士生下兩個孩子。于 1901 年在登尼丁去世，享年 63 歲。

1902 年 10 月徐肇開的棺槨原本同其他 498 具骸骨由 S S Ventnor 船運回家安葬，但是船觸礁沉沒了，部份棺材及骸骨漂流回海岸邊，由當地的毛里人重新埋葬。在 2012 年確實了沉船的位置，而許多棺木也在沉船內，希望他們靈魂永遠安息。

***一年一度的傳統週,**

現已經發展為基督城的壞舊傳統節日, 10月7日至28日在市政府圖書館舉辦紀念活動, 它帶動不同社區項目及活動.

今年的主題是“邂逅我們的故事”, 本會有幸參與由市政府圖書館在10月12日至19日的活動, 展覽紐西蘭華人的歷史, 有大量出版書籍有關華僑及早期移民的歷史

****“專業漿洗”一書**

由華人人頭稅歷史遺產信託委員會, 委託 Dr. Joanna Boileau 研究及撰寫一本紐西蘭的中國人洗衣店歷史書. 限量版書籍於2019年10月發行, 每本\$49.95. 訂購從速, 數量有限.

訂購請聯絡 Lois Yee, email: yeelois@yahoo.com

手機: 022 564 7933

洗衣店於1880年代開始至1950年代息微, 由最南部發展到北部城鎮, 為何至40年代時整個行業消失? 誰管理及如何融入社區? 此書講述洗衣店的員工, 他們的家人及顧客的故事. 早期移民四大職業是洗衣店, 礦工, 菜園, 零售店.

手洗的洗衣業, 早期華人為新的生活而提供低工資, 長時間工作. 此書也反駁洗衣店卑微及不熟練手工的說法, 雖然華人洗衣舖簡陋, 但是他們都是漿洗專家, 尤其是男仕們的衣領漿得硬直.

此書結合紀錄片研究, 個人故事, 迷人圖片, 將你帶入當時的世界.

Dr. Joanna Boileau 是一位專門研究在澳大利亞及紐西蘭的華人歷史學專家.

最近出版. *Chinese Market Gardening in Australia and New Zealand: Gardens of Prosperity* was published by Palgrave McMillan in 2017

***廚房翻新工程**

在中秋節餐會上向大家宣佈會所的廚房正進行相討翻新事宜, 我們的執行委員已討論數個月, 要令廚房合附規格, 及更高效果. 由 Margaret Young (Otago 分會成員) 付責設計規劃圖積, 她是多次榮獲廚房設計大獎的設計師.

廚房工程由 Wing Gin 付責, 並由 Peter Yee 夫婦二人協助, 他們都是從事飲食業多年, 經驗豐富, 小組成員有 Roy Chin, Marisa Yeung, Jane Gin, Emmie King, Fran Yee, Lois Yee, 和 Rhonda Ding . 我們感謝廚房翻新團隊.

我們要求會員的支持這個工程, 使會所有一個合規格, 有高效用的廚房, 希望各人能夠贊助或任何捐款. 請聯絡 Fran Yee (ph 021 138 3663 or fannieyee@yahoo.co.nz)

***2019 年度全球籃球錦標賽**

於10月5至6日我會的代表“Peking Dunk”參加今年第九屆賽事, 這個比賽由菲律賓文化和移民事務所主辦, 在星期六早上8.30便開始, 對一些人來說真是早了一点吧. 開幕詞由基督城多元化議會的 Dr Surinder Tandon 主持, 講及健康的比賽和對社區應有歸屬感. 比賽在週日結束, 我們的隊伍在六場比賽中贏得四場, 全場總分是第三名, 球隊吸取教訓有望明年取得更好成績. 球隊成員各多謝華聯會及會員的慷慨贊助.

社交活動

*北京醫療保健操

每星期六早上 10.30-11.30, 會員\$2.00 非會員\$3.00 .

聯絡人:Mrs Jane Gin (ph 021 175 5866)

*廣東話, 國語班有初, 中, 高三級班正式開課

初級普通話 9.30-11.00am

初級廣東話 9.30-11.00am

中級普通話 10.00-11.00am

高級普通話 10.00-11.30am

英語(不是母語)9.30-11.00am

我們期待更多兒童及成人參加課程, 學期及假期如同本地小學,每學期收費\$25.00 歡迎報名參加,有意者請聯系 Fran Yee (ph 021 138 3663 or fannieyee@yahoo.co.nz)

*卡拉 OK (一邊唱歌, 一邊跳舞)

每月一次, 請留意通訊. 時間:2.00pm

地点: 本會大堂

費用:\$4.00/位

請聯系:Jane Gin (ph 021 175 5866)

*排舞

星期六 9.15.-10.15am, 每位收費\$3.00.請聯絡 Emmie King : 021 211 7441
graem88@xtra.co.nz)進一步的資訊.

*舞蹈班

舞蹈班將於星期日晚上 7.00-8.00pm 開始。歡迎各位參加,每位收費\$10.00,晚上可用本會停車場

請聯絡 Emmie King (ph 021 211 7441, graem88@xtra.co.nz)

*多項運動節目(適用不同年齡)

逢星期日(公眾假期除外), 由 11.30am 至 12.30pm, 收費\$3.00 一場.

地址:Venue: Graham Condon Recreation and Sports Centre,

3 Sisson Drive, Papanui

請聯絡 Emmie King : 021 211 7441 graem88@xtra.co.nz)

***未來龍的傳人俱樂部**

歡迎由 20-35 歲華人參加

Melissa Wong (m.carley.wong@gmail.com) Tony Ng (toneohsix@gmail.com)

詳情請登入網站 Visit: www.futuredragonz.org.nz

***僑藝舞獅隊**

每星期六 3.30-4.30PM 在會所訓練, 為未來中國文化表演, 歡迎任何人有興趣參加. 聯絡人 George Chan (gwhchan71@yahoo.co.nz) 021 1886096

***步行組**

每星期五 10.00AM 步行約一小時, 步行後午餐, 不同地點, 邀請各成員參加, 如果有興趣參加此步行, 請聯絡伍新添 [ph.3390188](tel:3390188) (ng.tim@hotmail.com)

Marisa Yeung ([ph 021 112 6265](tel:0211126265), hopyick@xtra.co.nz)

***太極班**

每星期日, 早上 9.00am 至 10.00am, 歡迎各位參加, 每人金幣捐款

聯絡人 Marisa Yeung (hopyick@xtra.co.nz)

**堅都布厘華聯支會網站 canterbury.nzchinese.org.nz*

面書: <https://www.facebook.com/CanterburyBranchNZCA/>

會員如希望刊登有關中國人的活動, 事項及故事請聯絡本會編輯: Ronald Lee at ronald18@orcon.net.nz

***鳴謝和捐款**

本會非常多謝由:

北京醫療保健操的捐款共\$361.00

太極班\$ 348.60

排舞 \$248.00

***訃聞**

Mrs. Thelma Moy 梅暢衡夫人於 8 月 27 日去世, 她常是會所烹飪不可缺少的一人, 包粽子, 做月餅, 新年的咸點心都熱心幫忙. 她捐出的用具, 我們一定會好好的利用.

甄麗瑞英女士 Mrs Nan Yuen (Hilda) 在 10 月 13 日於 Parkstone Care Home 去世, 生前是本會活躍分子.

我們向她的家人表示深切的慰問.

***會所出租**

本會所大堂出租, 適合生日派對, 開會等, 除星期日外. 有廚房設施, 可移動小舞臺, 會員特價優待.

請聯絡 Marisa Yeung 021 1126265 或 (hopyick@xtra.co.nz)

***會員**

各位會員的支持對本會是很重要, 捐款及會員費提供本會社團活動, 定期通訊信件. 如果你有家人和朋友 16 歲或以上, 想成為紐西蘭堅都布厘華聯支會成員, 請聯絡本會秘書 Rhonda Ding(021 259 0745)

或電子郵件 nzcacanterbury@gmail.com

***電郵收通告**

鼓勵會員用電郵方法收通訊, 可與

Rhonda Ding 手機 021 2590745 或電子郵件 nzcacanterbury@gmail.com

Marisa Yeung <021 1126265 或 hopyick@xtra.co.nz> 聯絡

***喬遷通告**

如果會員最近改了新地址, 請向本會秘書通知. New Zealand Chinese Association (Canterbury Branch), P O Box 31-276, Ilam 8444. Christchurch, 讓我們確保你收到本會的通告.

年終報告(伍黃間容主席)

特別感謝 2019 年度運動大會的協調員 Victoria King 和 Matthew Klomp.

Auto Restoration 借出停車場,

我值此機會多謝各活動小組主持人, 中文學校老師, 健康操及太極班師傅, 對本會的支持及貢獻. 使本會更加強大成為一個成功的社區組織..

首先要感謝各位執行委員奉獻及支持, 建立一個強壯的社團, 團隊們的無窮工作, 應得到表揚. Cindy Chan 陳簫麗華, Ian Chan, Roy Chin, Rhonda Ding 顏鄧少仙, Jane Gin 甄歐彩貞, Adrienne Kilduff, Graham King 伍閏能, Ronald Lee, Daret Lowe, Tim Ng 伍新添, Conrad Wing, Fannie Yee 余陳翠芬, Lois Yee 余笑儀, Marisa Yeung 楊陳惠嫦.

特別感謝 Rhonda 和 Marisa 不斷努力, 為會員提供查詢聯絡.

又感謝 Roy Chin 付出大量時間替本會大樓執行各種繁瑣的維修工作.



THE NEW ZEALAND CHINESE ASSOCIATION INC.
(CANTERBURY BRANCH) 紐西蘭堅都布厘華聯支會
22 St Asaph Street, PO Box 31-276
Ilam, Christchurch 8444